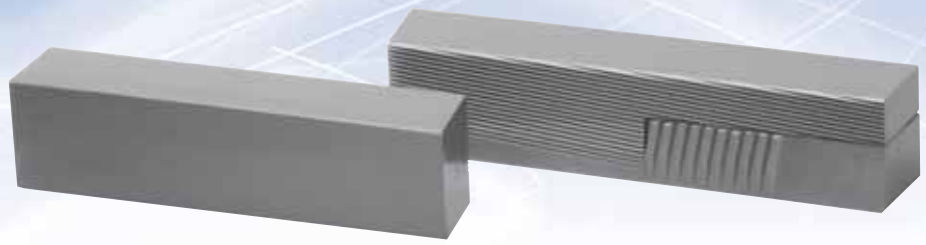
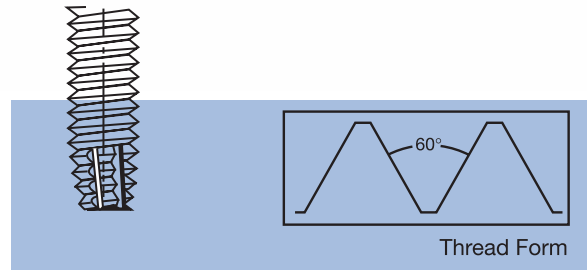


Type F Single Face



OSG Type F tapping screw dies are stocked for immediate delivery.



Machine Size	W.F.F.	00-00 "V"			0-0 "V"				1015	10-1/4 "V"			20-3/8 BMU-3/8 "V"				
	Man.				OC-130C			1B-2 188C		2B-2C			3B-3C-375C				
	Hart Spec.				A190 0-500, 0-400				4-600	10-400, 10-300 A312			20-225				
Depth of Face		5/8"	1-1/8"	3/4"	1-1/4"	1-5/8"	1"	3/4"	1-1/4"	1-5/8"	1-1/8"	1-5/8"	2-1/8"	1-5/8"	2-1/8"	2-5/8"	3-1/8"
Screw Size	Screw Length	Standard Dies-Stock Sizes															
4-40	3/8			36024													
6-32	1/4			36001													
	5/16			36002													
	3/8			36003													
	1/2			36004													
	5/8			36005													
	3/4				36017												
8-32	1/4			36006													
	5/16			36007													
	3/8			36008													
	1/2			36009													
	5/8			36010													
	3/4				36018												
10-24	1			36026													
	3/8			36011													
	1/2			36012													
	5/8			36013													
10-32	3/4			36027													
	5/16			36025													
1/4-20	3/8			36014													
	1/2			36015													
	5/8			36016													
	3/4											36021					
	1/2										36022						
	5/8										36023						
	3/4																