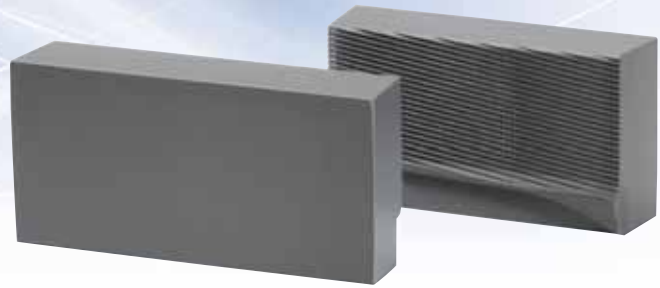
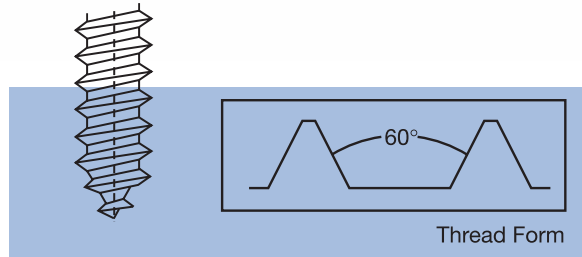


# HY-PRO® AB

## Single Face



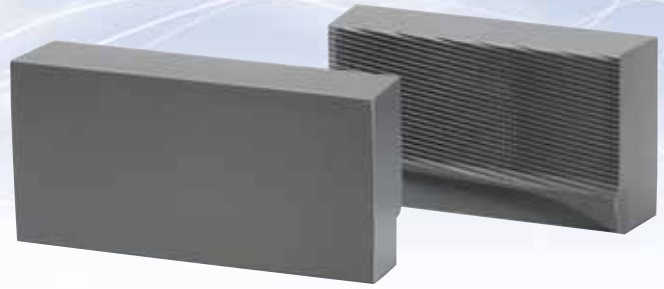
- Single face gimlet point dies with the OSG quality cut-off design.
- The OSG design gimlet point allows for easy set up and consistent quality points.
- HY-PRO® tapping screw dies are made in the USA and stocked in Illinois for immediate, same day shipment.



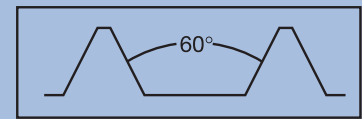
Machine Size		W.F.F.	0-0 "V"			1015		10-1/4 "V"		
		Man.	0C-130C					2B-2C		
		Hart Spec.	A190 0-500, 0-400			4-600		10-400, 10-300 A312		
Depth of Face		3/4"	1-1/4"	1-5/8"	1-1/4"	1-5/8"	1-1/8"	1-5/8"	2-1/8"	
Screw Size	Screw Length	Standard Dies-Stock Sizes								
4-24	5/16	34704								
5-20	5/8	34772								
6-20	3/8	34709								
	1/2	34710								
	3/4		34716							
7-19	1/2	34713								
	5/8	34714								
8-18	1/4	34722								
	5/16	34723								
	3/8	34724								
	7/16	34725								
	1/2	34726								
	5/8	34727								
	3/4		34731							
	7/8		34732					34740		
	1		34733							
	1-1/4				34766		34773		34758	
1-1/2									34759	

# HY-PRO® AB

## Single Face



OSG Gimlet Point Dies are produced under strict SPC control, using the latest CNC machinery. More accuracy means more consistent points and more uniform thread. Dies are stocked in Type AB style.



Thread Form

Machine Size		W.F.F.	0-0 "V"			1015		10-1/4 "V"		
		Man.	OC-130C					2B-2C		
		Hart Spec.	A190 0-500, 0-400			4-600		10-400, 10-300 A312		
Depth of Face		3/4"	1-1/4"	1-5/8"	1-1/4"	1-5/8"	1-1/8"	1-5/8"	2-1/8"	
Screw Size	Screw Length	Standard Dies-Stock Sizes								
10-16	3/8	34728						34743		
	1/2	34729								
	5/8	34730								
	3/4		34734					34745		
	7/8		34735					34746		
	1							34747		
	1-1/4								34760	
	1-1/2								34761	
12-14	2									34765
	1/2							34748		
	5/8							34749		
	3/4							34750		
	7/8							34751		
	1							34752		
1/4-14	1-1/4								34762	
	1-1/2								34767	
	1/2							34753		
	9/16									
1/4-14	5/8							34754		
	3/4					34778		34755		
	7/8							34756		
	1							34757		
	1-1/4								34763	
	1-1/2								34764	