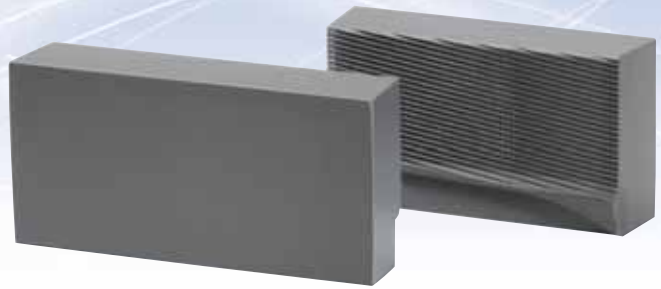
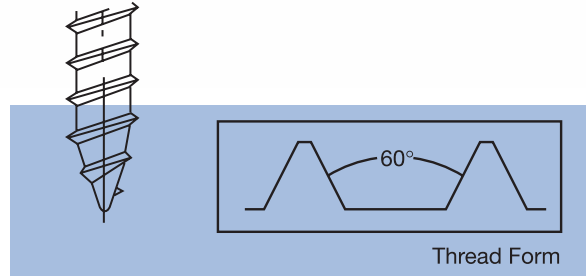


# Type A Single Face

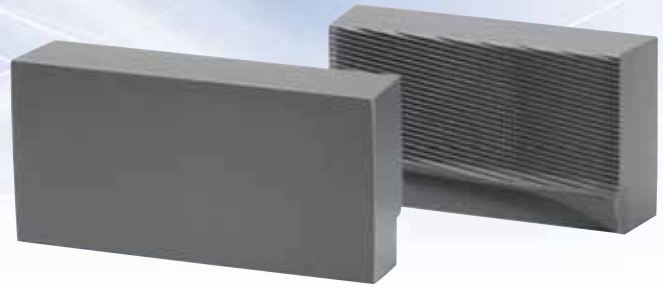


OSG dies will consistently produce the finest points.

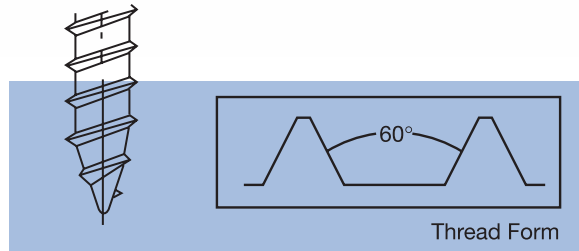


Machine Size		W.F.F.	00-00 "V"		0-0 "V"		1B-2 188C		1015		10-1/4 "V"		
		Man.			0C-130C						2B-2C		
		Hart Spec.			A190 0-500, 0-400				4-600		10-400, 10-300 A312		
Depth of Face		5/8"	1-1/8"	3/4"	1-1/4"	1-5/8"	1"	3/4"	1-1/4"	1-5/8"	1-1/8"	1-5/8"	2-1/8"
Screw Size	Screw Length	Standard Dies-Stock Sizes											
4-24	1/4	35001		35004									
	5/16	35002		35005									
	3/8	35003		35006									
	1/2			35007									
	5/8			35008									
	3/4				35020								
6-18	1/4			35010									
	3/8			35011									
	1/2			35012									
	5/8			35013				35082					
	3/4				35021				35088				
	7/8				35022								
	1				35023					35089			
1-1/4					35026								
7-16	3/8			35014									
	1/2			35015									
	5/8			35016									
	3/4				35024								
	1				35025								
8-18	1/4			35017									
	5/16			35018									
	3/8			35019									

# Type A Single Face



OSG dies will consistently produce the finest points.



Machine Size		W.F.F.	0-0 "V"			1015			10-1/4 "V"		
		Man.	OC-130C		1B-2 188C			2B-2C			
		Hart Spec.	A190 0-500, 0-400			4-600		10-400, 10-300 A312			
Depth of Face		3/4"	1-1/4"	1-5/8"	1"	3/4"	1-1/4"	1-5/8"	1-1/8"	1-5/8"	2-1/8"
Screw Size	Screw Length	Standard Dies-Stock Sizes									
8-15	1/4	35028									
	5/16	35029									
	3/8	35030							35043		
	7/16	35031							35044		
	1/2	35032				35083			35044		
	5/8	35033				35085					
	3/4		35038						35046		
	7/8		35039						35047		
	1		35040						35048		
	1-1/4			35076						35067	
	1-1/2									35068	
	1-3/4										35079
2										35080	
10-16	3/8	35034									
10-12	3/8	35035							35050		
	1/2	35036							35051		
	5/8	35037							35052		
	3/4		35041						35053		
	7/8		35042						35054		
	1		35075				35092		35055		
	1-1/4									35069	
	1-3/8									35077	
	1-1/2									35070	
	1-3/4										35093
2										35074	
12-11	1/2								35056		
	5/8								35057		
	3/4								35058		
	7/8								35059		
	1								35060		
	1-1/4									35071	
1-1/2									35078		
14-14	1/2								35061		
14-10	1/2								35062		
	5/8								35063		
	3/4								35064		
	7/8								35065		
	1								35066		
	1-1/4									35072	
	1-1/2									35073	
	2										35081