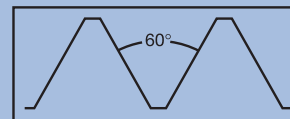
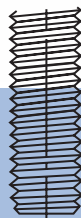
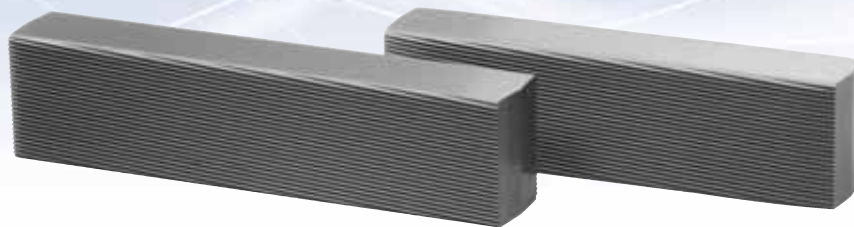


Type UNR or UN Duplex Face



Thread Form

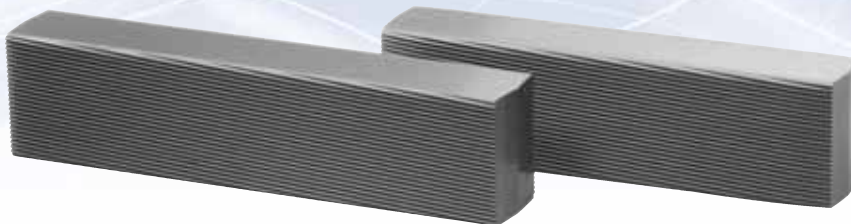
Test the value of our standard and premium steel:

- UN —American Standard Unified Screw Threads
 - Classes 1A, 2A, 3A also used for N
 - American National Screw Threads
 - Classes 2 and 3
- UNR —Unified Thread with controlled Radius Root

| Machine Size | W.F.F. | 00-00 "V" | | 0-0 "V" | | | 1015 | | | | 10-1/4 "V" | | |
|---------------|---------------------------|-----------|--------|----------------------|--------|--------|-------|--------|--------|--------|------------------------|--------|--------|
| | Man. | | | 0C-130C | | | | | | | 2B-2C | | |
| | Hart Spec. | | | A190 0-500, 0-400 | | | 4-600 | | | | 10-400, 10-300 A312 | | |
| Depth of Face | | 5/8" | 1-1/8" | 3/4" | 1-1/4" | 1-5/8" | 3/4" | 1-1/4" | 1-5/8" | 2-1/8" | 1-1/8" | 1-5/8" | 2-1/8" |
| Thread Size | Standard Dies-Stock Sizes | | | | | | | | | | | | |
| 0-80 UNRF | | | 30250 | | | | | | | | | | |
| 1-72 UNRF | | | 30251 | | | | | | | | | | |
| 2-56 UNRC | 30001 | 30006 | | | | 30031 | | | | | | | |
| 2-64 UNRF | 30002 | | | | | | | | | | | | |
| 3-48 UNRC | | 30007 | 30252 | | | 30032 | | | | | | | |
| 3-56 UNRF | | 30008 | | | | 30033 | | | | | | | |
| 4-36 UNRS | | 30009 | | | | | | | | | | | |
| 4-40 UNRC | 30004 | 30010 | 30015 | 30021 | 30035 | | | | | | | | |
| 4-48 UNRF | | 30011 | | 30022 | | | | | | | | | |
| 5-40 UNRC | | 30012 | | 30023 | 30036 | | | | | | | | |
| 5-44 UNRF | | | | | | | | | | | | | |
| 6-32 UNRC | 30005 | 30013 | 30016 | 30024 | 30037 | | 30253 | | | | | 30050 | 30060 |
| 6-40 UNRF | | | | 30025 | 30038 | | | | | | | | |
| 8-32 UNRC | | 30014 | 30018 | 30026 | 30039 | | 30254 | 30257 | | | | 30051 | 30061 |
| 8-36 UNRF | | | | | 30040 | | | | | | | | |
| 10-24 UNRC | | | 30019 | 30027 | 30041 | | 30255 | 30258 | 30261 | | | 30052 | 30062 |
| 10-32 UNRF | | | 30020 | 30028 | 30042 | | 30256 | | 30262 | 30046 | 30053 | 30063 | |
| 12-24 UNRC | | | | 30029 | 30043 | | | | | | | 30054 | 30064 |
| 1/4-20 UNRC | | | | 30030 | 30044 | | | 30259 | 30263 | 30047 | 30056 | 30066 | |
| 1/4-28 UNRF | | | | | 30045 | | | | | 30048 | 30057 | 30067 | |
| 5/16-18 UNRC | | | | | | | | | | 30049 | 30058 | 30068 | |
| 5/16-24 UNRF | | | | | | | | | | | 30059 | 30069 | |
| 3/8-16 UNRC | | | | | | | | | | | | | 30070 |
| 3/8-24 UNRF | | | | | | | | | | | | | 30071 |

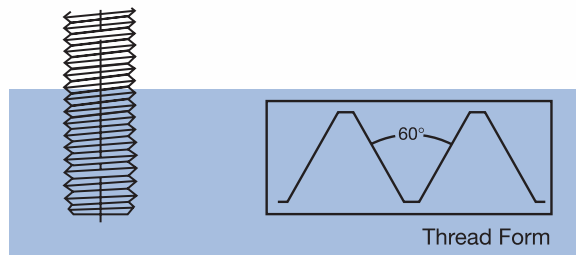
- Special dies to roll stainless steel screws are stocked in select sizes. UNJ thread dies are priced by quotation.

Type UNR or UN Duplex Face



Test the value of our standard and premium steel:

- UN —American Standard Unified Screw Threads
 - Classes 1A, 2A, 3A also used for N
 - American National Screw Threads
 - Classes 2 and 3
- UNR —Unified Thread with controlled Radius Root



| Machine Size | W.F.F. | 20 – 3/8 BMU – 3/8 "V" | | | | 30 – 1/2 BMU – 1/2 "V" | | | | 40 | | | |
|---------------|---------------------------|------------------------|--------|--------|-------|------------------------|--------|--------|--------|---------|--------|--------|--|
| | Man. | 3B-3C-375C | | | | 4B-500C | | | | 5B-625C | | | |
| | Hart Spec. | 20-225 | | | | 30-180 | | | | 40-140 | | | |
| Depth of Face | 1-5/8" | 2-1/8" | 2-5/8" | 3-1/8" | 2" | 2-3/4" | 3-1/4" | 4-1/8" | 2-5/8" | 3-1/4" | 4-1/8" | 4-5/8" | |
| Thread Size | Standard Dies-Stock Sizes | | | | | | | | | | | | |
| 8-32 UNRC | | | | 30265 | | | | | | | | | |
| 10-24 UNRC | | 30078 | | 30095 | | | | | | | | | |
| 10-32 UNRF | | 30079 | | 30096 | | | | | | | | | |
| 1/4-20 UNRC | 30072 | 30080 | 30090 | 30097 | 30102 | | | | | | | | |
| 1-4-28 UNRF | 30073 | 30081 | | 30098 | 30103 | | | | | | | | |
| 5/16-18 UNRC | 30074 | 30082 | 30091 | 30099 | | 30116 | | 30127 | | | | | |
| 5/16-24 UNRF | 30075 | 30083 | 30092 | | | | | | | | | | |
| 3/8-16 UNRC | 30076 | 30084 | 30093 | 30100 | 30106 | 30117 | | 30128 | | | | | |
| 3/8-24 UNRF | 30077 | 30085 | 30094 | 30101 | 30107 | 30118 | | | | | | | |
| 7/16-14 UNRC | | 30086 | | | 30108 | 30119 | | | | | | | |
| 7/16-20 UNRF | | 30087 | | | 30109 | 30120 | | | | | | | |
| 1/2-13 UNRC | | 30088 | | | 30110 | 30121 | | 30266 | 30131 | 30138 | | | |
| 1/2-20 UNRF | | 30089 | | | 30111 | 30122 | | 30129 | 30132 | 30139 | | | |
| 9/16-12 UNRC | | | | | 30112 | 30123 | | | | 30140 | | | |
| 9/16-18 UNRF | | | | | | 30124 | | | | 30141 | | | |
| 5/8-11 UNRC | | | | | 30114 | 30125 | | | 30134 | 30142 | | | |
| 5/8-18 UNRF | | | | | 30115 | 30126 | | | 30135 | 30143 | | | |
| 3/4-10 UNRC | | | | | | | | | | 30144 | | | |
| 3/4-16 UNRF | | | | | | | | | | 30145 | | | |

- Special dies to roll stainless steel screws are stocked in select sizes. UNJ thread dies are priced by quotation.