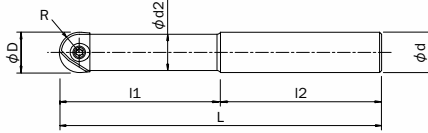


Ball End Indexable (PFB)

PFB (Inch & Metric)



Steel Shank



Metric

EDP No.	Body Type	Designation	Tool Dia. (mm)	Tool Rad. (mm)	OAL (mm)	Neck Length (mm)	L/D Ratio	No. of Teeth	Shank Dia. (mm)	Shank Length (mm)	Neck Dia. (mm)	Stock	Price
			D	R	L	l1			d	l2	d2		
7801400	Cylindrical Shank Steel	PFB-R080SS08-S120	8	4	120	36	4,5	2	8	84	7	●	
7801401		PFB-R100SS10-S130	10	5	130	45	4,5	2	10	85	9	●	
7801402		PFB-R120SS12-S130	12	6	130	54	4,5	2	12	76	11	●	
7801403		PFB-R160SS16-S140	16	8	140	64	4	2	16	76	14	●	
7801404		PFB-R200SS20-S160	20	10	160	80	4	2	20	80	18	●	
7801405		PFB-R250SS25-S160	25	12,5	160	75	3	2	25	85	22	●	
7801406	PFB-R300SS32-S170	30	15	170	90	3	2	32	80	27	●		
7801430	Cylindrical Shank Carbide (short)	PFB-R080SS8-S100CS	8	4	100	20	2,5	2	8	80	7	●	
7801431		PFB-R100SS10-S100CS	10	5	100	25	2,5	2	10	75	9	●	
7801432		PFB-R120SS12-S110CS	12	6	110	30	2,5	2	12	80	11	●	
7801433		PFB-R160SS16-S140CS	16	8	140	40	2,5	2	16	100	14	●	
7801434		PFB-R200SS20-S160CS	20	10	160	50	2,5	2	20	100	18	●	
7801435		PFB-R250SS25-S160CS	25	12,5	160	62,5	2,5	2	35	97,5	22	●	
7801436	PFB-R300SS32-S170CS	30	15	170	75	2,5	2	32	95	27	●		
7801420	Cylindrical Shank Carbide (long)	PFB-R080SS08-LL140CS	8	4	140	56	7	2	8	84	7	●	
7801421		PFB-R100SS10-LL150CS	10	5	150	70	7	2	10	80	9	●	
7801422		PFB-R120SS12-LL160CS	12	6	160	84	7	2	12	76	11	●	
7801423		PFB-R160SS16-LL200CS	16	8	200	96	6	2	16	104	14	●	
7801424		PFB-R200SS20-LL240CS	20	10	240	120	6	2	20	120	18	●	
7801425		PFB-R250SS25-LL260CS	25	12,5	260	137,5	5,5	2	25	122,5	22	●	
7801426	PFB-R300SS32-LL290CS	30	15	290	165	5,5	2	32	125	27	●		

Inch

EDP No.	Body Type	Designation	Tool Dia. (in)	Tool Rad. (in)	OAL (in)	Neck Length (in)	L/D Ratio	No. of Teeth	Shank Dia. (in)	Shank Length (in)	Neck Dia. (in)	Stock	Price
			D	R	L	l1			d	l2	d2		
52100001	Cylindrical Shank Steel	PFB-R0375SS0375-S600	0,375	0,1875	6	1,688	4,5	2	0,375	4,312	4,460	●	
52100002		PFB-R0500SS0500-S550	0,500	0,250	5,5	2,250	4,5	2	0,500	3,250	4,460	●	
52100003		PFB-R0625SS0625-S550	0,625	0,3125	5,5	2,500	4	2	0,625	3,000	3,920	●	
52100004		PFB-R0750SS0750-S600	0,750	0,375	6	3,000	4	2	0,750	3,000	3,920	●	
52100005		PFB-R1000SS1000-S650	1,000	0,500	6,5	3,000	3	2	1,000	3,500	2,880	●	
52100011	Cylindrical Shank Carbide	PFB-R0375SS0375-LL600CS	0,375	0,1875	6,5	2,625	7	2	0,375	3,875	6,960	●	
52100012		PFB-R0500SS0500-LL550CS	0,500	0,250	7	3,500	7	2	0,500	3,500	6,960	●	
52100013		PFB-R0625SS0625-LL550CS	0,625	0,3125	7,5	3,750	6	2	0,625	3,750	5,920	●	
52100014		PFB-R0750SS0750-LL600CS	0,750	0,375	9	4,500	6	2	0,750	4,500	5,920	●	
52100015		PFB-R1000SS1000-LL650CS	1,000	0,500	10,5	5,500	5,5	2	1,000	5,000	5,380	●	

Packed: 1 pc.

Metric

Appearance	Designation	Spec.	No. of cutting edges	Insert Size				Grade of Coated material		Stock	Price
				D	R	T	H	XC4505			
	PFB080-D	Spiral Type (Diamond Coated)	2	8	4	2,4	7	7820020		●	
	PFB100-D		2	10	5	2,6	8,5	7820021		●	
	PFB120-D		2	12	6	3	10	7820022		●	
	PFB160-D		2	16	8	4	12	7820023		●	
	PFB200-D		2	20	10	5	15	7820024		●	
	PFB250-D		2	25	12,5	6	18,5	7820025		●	
	PFB300-D		2	30	15	7	22,5	7820026		●	

Inch

Appearance	Designation	Spec.	No. of cutting edges	Insert Size				Grade of Coated material		Stock	Price
				D	R	T	H	XC4505			
	PFB0375-D	Spiral Type (Diamond Coated)	2	0,375	0,1875	2,6	8,5	52101001		○	
	PFB0500-D		2	0,500	0,250	3	10	52101002		○	
	PFB0625-D		2	0,625	0,3125	4	12	52101003		○	
	PFB0750-D		2	0,750	0,375	5	15	52101004		○	
	PFB1000-D		2	1,000	0,500	6	18,5	52101005		○	